



Apartment 105

\$700,000

Duport

A comfortable fully refurbished 2 bedroom, 2 bathroom apartment conveniently located in the main building. Located on the second floor and offering a wonderful outlook over leafy Corinda. It's only a lift ride to the hub of our village – Kingsford Café. If you're looking for a carefree retirement filled with great neighbours and plenty of activity options, don't miss out on this rarely available main building apartment. Kingsford Terrace, with its tropical gardens and plenty of green space, always make people feel right at home. Pets are welcome.

Apartment Features:

- Open plan living, dining and kitchen
- Smartly designed kitchen with modern appliances
- 2 spacious and bright bedrooms, master with ensuite
- Separate second bathroom and separate laundry
- Secure car park

To learn more about the village or to get a copy of the floor plans, please call Narelle on 0434 023 013.

*Price correct at time of printing. Images indicative only.

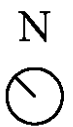
-  2 Bedrooms
-  2 Bathrooms
-  1 Car space

Level: Ground
Total area: 103 m2
Facing: West



Apartment 105

INTERNAL AREA: 90 m² | EXTERNAL AREA: 13 m² | TOTAL AREA: 103 m²



*Note: Preliminary apartment layout, subject to change with development of design.
 Apartment areas measured to centreline of external walls, party walls and corridor walls, inclusive of internal walls and ducts. Balcony areas measured to outside face of balcony and centreline of building external walls.