



# Apartment 80

\$440,000

*Duport*

## *A light and airy apartment with a wonderful terrace*


Welcome to your oasis at Kingsford Terrace Retirement Village – embrace hassle-free living and access to first-class amenities in this welcoming community. Your retirement lifestyle awaits at Kingsford Terrace Corinda.


### Apartment Features include:

- Open plan living, dining and kitchen
- Smartly designed kitchen with modern appliances
- Perfectly positioned apartment to catch the breezes
- Very large bathroom with laundrette
- Secure car park (at request)

To learn more about the village or to get a copy of the floor plans, please call Narelle on 0434 023 013.

\*Price correct at time of printing. Images indicative only.

 1 Bedroom

 1 Bathroom

Level: 1

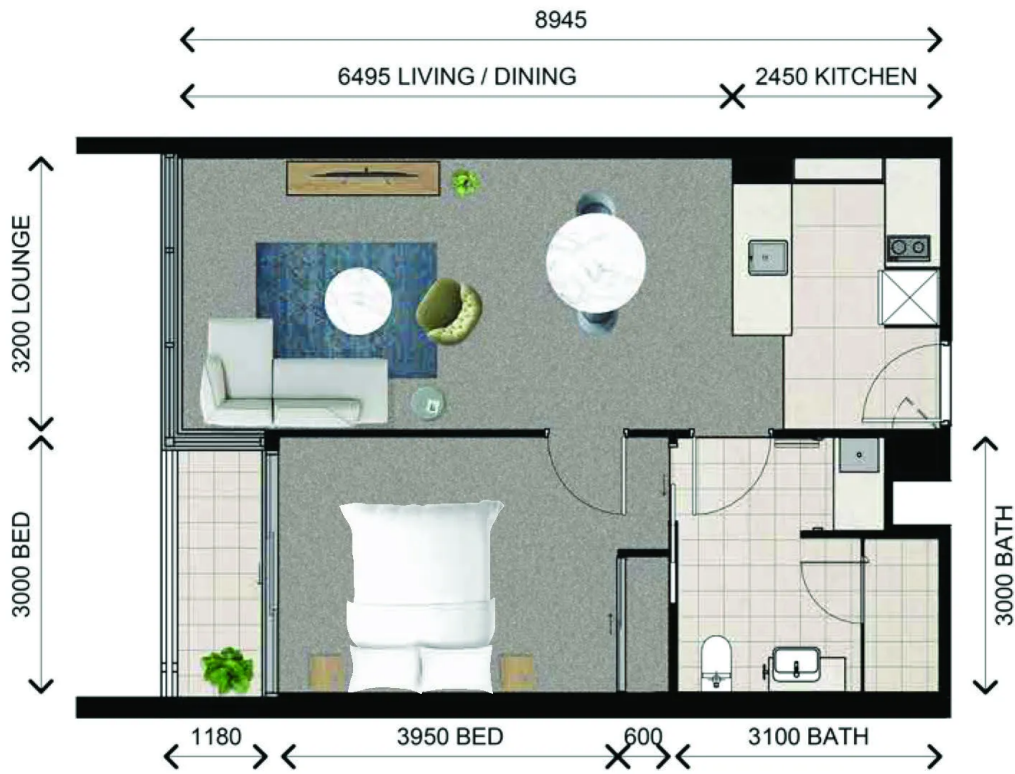
Total area: 61 m<sup>2</sup>

Facing: North



# Apartment 80

INTERNAL AREA: 57 m<sup>2</sup> | EXTERNAL AREA: 4 m<sup>2</sup> | TOTAL AREA: 61 m<sup>2</sup>



\*Note: Preliminary apartment layout, subject to change with development of design.  
 Apartment areas measured to centreline of external walls, party walls and corridor walls, inclusive of internal walls and ducts. Balcony areas measured to outside face of balcony and centreline of building external walls.

