



Apartment 209

\$945,000

Taylor

An idyllic apartment positioned to capture the breeze and morning sun

Apartment 209 in the Taylor building has all the space of a 3 bedroom apartment including a wonderful kitchen with large butler's pantry. Experience unparalleled comfort and safety at Kingsford Terrace Corinda.

Features include:

- East facing apartment with spectacular views
- Open plan living and dining flowing through to your outdoor entertaining area
- Contemporary kitchen with butler's pantry and separate laundry
- Master bedroom with walk through wardrobe, and en-suite with double sinks
- A wonderful multi purpose room that could be used for guests, or as an office or sewing room

To learn more about Kingsford Terrace please call Narelle on 0434 023 013.

-  2 Bedrooms
-  2 Bathrooms
-  1 Car space
-  1 Study

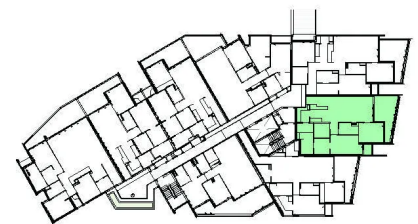
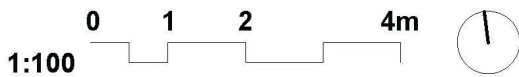
Level: 3
Total area: 134 m2
Facing: East

*Price correct at time of printing. Images indicative only.



Apartment 209

INTERNAL AREA: 109 m² | EXTERNAL AREA: 25 m² | TOTAL AREA: 134 m²



TYPICAL LEVELS 1-5

*Note: Preliminary apartment layout, subject to change with development of design.
 Apartment areas measured to centreline of external walls, party walls and corridor walls, inclusive of internal walls and ducts. Balcony areas measured to outside face of balcony and centreline of building external walls.