



Apartment 218

\$865,000

Amazing top floor apartment with 180 degree views!

This is the largest two-bedroom apartment on offer and invites you to enjoy a top-floor 180 degree view! Personalize your space just the way you like it, and embrace hassle-free living with access to world-class community facilities, like a vibrant cafe, landscaped gardens, and a relaxing poolside.

At Kingsford Terrace Corinda, it's all about you – your privacy, security, and the lifestyle you deserve. Say hello to a fulfilling retirement in a welcoming community that knows you by name.

Apartment features include:

- Top floor and east facing apartment
- Open plan living and dining flowing through to your outdoor entertaining area
- Contemporary kitchen with butler's pantry and separate laundry
- Master bedroom with walk through wardrobe and ensuite
- Plenty of storage in the bedrooms and kitchen

To learn more about the village or to get a copy of the floor plans, please call Narelle on 0434 023 013.

*Price correct at time of printing. Images indicative only.

-  2 Bedrooms
-  2 Bathrooms
-  1 Car space

Level: 5

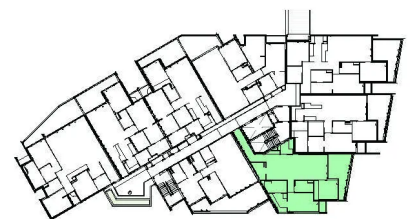
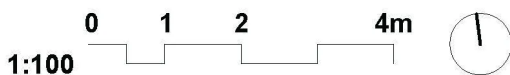
Total area: 137 m2

Facing: East



Apartment 218

INTERNAL AREA: 113 m² | EXTERNAL AREA: 24 m² | TOTAL AREA: 137 m²



TYPICAL LEVELS 1-5

*Note: Preliminary apartment layout, subject to change with development of design.
 Apartment areas measured to centreline of external walls, party walls and corridor walls, inclusive of internal walls and ducts. Balcony areas measured to outside face of balcony and centreline of building external walls.