



# Apartment 186

\$790,000

*Taylor*

*Our largest two bedroom apartment with a lovely easterly aspect*

Apartment 186 is a great opportunity to secure an apartment in Kingsford Terrace.

Features include:

- Open plan living and dining flowing through to your extensive verandah
- Plenty of storage
- Contemporary kitchen with butler's pantry and separate laundry
- Master bedroom with walk through wardrobe and ensuite
- Parking in secure basement

To learn more about Kingsford Terrace Corinda or to get a copy of the floor plans, please call Narelle on 0434 023 013.

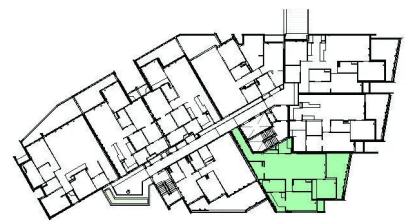
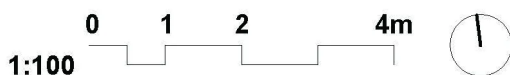
\*Price correct at time of printing. Images indicative only.

-  2 Bedrooms
-  2 Bathrooms
-  1 Car space

Level: 1  
Total area: 137 m2  
Facing: East



## Apartment 186

INTERNAL AREA: 113 m<sup>2</sup> | EXTERNAL AREA: 24 m<sup>2</sup> | TOTAL AREA: 137 m<sup>2</sup>

TYPICAL LEVELS 1-5

\*Note: Preliminary apartment layout, subject to change with development of design.  
 Apartment areas measured to centreline of external walls, party walls and corridor walls, inclusive of internal walls and ducts. Balcony areas measured to outside face of balcony and centreline of building external walls.